

# 66 Kv Substation Drawing Graphical Structure

## 66 KV SUBSTATION DRAWING GRAPHICAL STRUCTURE

### 66 kv substation drawing pdf

66/11 kV Stations - 2.0 ©. If the soil resistivity is 800 ohm-meter or above it would have been difficult to obtain the desired low resistance of 1 to 2 ohm for the grid substation with the earthing strip alone.

### 66/11 kV DISTRIBUTION SUBSTATION DESIGN - IJARIE

66 KV SUBSTATION DRAWING GRAPHICAL STRUCTURE Download : 66 Kv Substation Drawing Graphical Structure 66 KV SUBSTATION DRAWING GRAPHICAL STRUCTURE - In this site isn't the same as a solution manual you buy in a book store or download off the web. Our Over 40000 manuals and Ebooks is the reason why customers keep coming back.If you need a 66 kv ...

### 66 KV SUBSTATION DRAWING GRAPHICAL STRUCTURE

facilities between the Scovill Rock Switching Station in the Town of Middletown and the Norwalk Substation in the City of Norwalk, Connecticut. C-2 APPENDIX C TABLE OF CONTENTS SUBSTATION DRAWINGS SINGER SUBSTATION Drawing No. Drawing Title 25251-400 Singer Substation Arrangement Plan 25251-401 Singer Substation Sections 1 and 2

### APPENDIX C SUBSTATION DRAWINGS - Connecticut

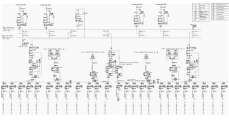
ge c60 instruction manual pdf download.resolve a doi namecontents sitemap indexPopularRandom Home 66 kv substation drawing graphical structure PDF ePub Mobi Download 66 kv substation drawing graphical structure PDF, ePub, Mobi Books 66 kv substation drawing graphical structure PDF, ePub, Mobi Page 1

### 66 Kv Substation Drawing Graphical Structure

400 kv gisdhalkebar substation drawing no. rev date modification notes 1.this drawings shows a typical layout of 400/220 kv gis ict substation. the bidder shall submit the layout of gis building as per offered equipments and earthing requirements and the same would be finalized after the approval of owner. 2.all dimension are in mm and ...

### Chapter 21- Drawings

Substation Design Manual. Page 31 of 120 Reference NI000401R121 Ver 2. Ergon Energy Corporation Limited ABN 50 087 646 062 Ergon Energy Queensland Pty Ltd ABN 11 121 177 802. an oil containment and separation system to prevent oily discharge in the event of equipment failure or an oil spill incident.



# 66 Kv Substation Drawing Graphical Structure

## **Substation Design Manual - Ergon Energy**

33/11 KV Power Transformers, Station 33/0.4 KV Transformers , VCB, kiosk, CT, PT, ... Prior to the commencement of the supply / work all relevant drawings, designs must be got approved from GM (P&EMS), NESCO ... Detailed investigation of substation and preparation of BOQ to be done by the bidder.

## **TECHNICAL SPECIFICATION Construction of 33/11 KV Primary**

SUBJECT: Design Guide for Rural Substations TO: All RUS Borrowers RUS Electric Staff EFFECTIVE DATE: Date of approval. OFFICE OF PRIMARY INTEREST: Transmission Branch, Electric Staff Division. INSTRUCTIONS: This bulletin is an update and revision of previous REA Bulletin 65-1, "Design Guide for Rural Substations" (revised June 1978).

## **Design Guide for Rural Substations - USDA Rural Development**

HV SUBSTATION PROJECT The Engineers of Matelec are Skilled & Experienced in Executing all the PRIMARY & SECONDARY ENGINEERING Necessary Activities to Design in House: Different Types of New GIS & AIS Substations (Single BB, Double BB, UI type BB, Breaker and a Half, etc.). Engineers Mains Scope of Works: Extensions of Existing S/S Choosing Feasible & Optimized Solution to

## **HV SUBSTATION PROJECT - Matelec group**

POWER EVACUATION, MAIN SINGLE LINE DIAGRAM, GRID INTERCONNECTION AND SWITCHYARD LAYOUT UP TO 245 kV 9.1 General Hydro electric generating plants are generally located away from load centres. Accordingly power generated is stepped up to a suitable high voltage in step up substation at generating end and transmission

## **CHAPTER " 9 POWER EVACUATION, MAIN SINGLE LINE DIAGRAM**

1. All the drawings, i.e. elevation, side view, plan, cross sectional view etc., in AutoCAD format and manuals in PDF format, for offered item shall be submitted. Also the hard copies as per specification shall be submitted. 2. The bidder shall submit Quality Assurance Plan with the technical bid. 3.